



**SOUTH WIRRAL HIGH SCHOOL**

A Visual & Performing Arts, Maths & Computing College

# ASSISTANT HOUSE PROGRESS LEADER

## INFORMATION FOR APPLICANTS



**Simon Goodwin**

Headteacher

*“Thank you for considering an application to join our pastoral system”*

# PASTORAL LEADERSHIP STRUCTURE

## William Chitty

Assistant Headteacher (from Sept)  
*Personal Development, Behaviour & Welfare*

## Holly Cottrell

SENCO / Assistant Headteacher  
*Behaviour for Learning*

LAIRD



### Dave Woodhall

House Progress Leader



& Assistant House Progress Leader

MAYER



### Sam Robinson

House Progress Leader



& Assistant House Progress Leader

STANLEY



### Siobhan Batch

House Progress Leader



& Assistant House Progress Leader

WILSON



### Michelle Adu

House Progress Leader



& Assistant House Progress Leader

+ **Claire Holden**  
Student Welfare Officer

# OPEN MORNING

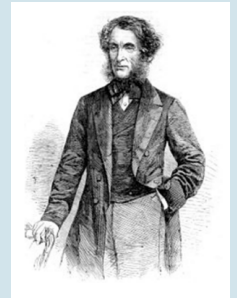
An opportunity for candidates to have a look around the school and speak to members of the pastoral team.

**TUESDAY 12TH JUNE  
1-3PM**

Please email [schooloffice@southwirral.wirral.sch.uk](mailto:schooloffice@southwirral.wirral.sch.uk) to confirm your attendance.

William Laird was born in 1780. He was a Scottish shipbuilder and developer who was responsible for what later became the Cammell Laird shipyard, and for starting the substantial development of its adjoining town, Birkenhead.

Laird commissioned Edinburgh architect James Gillespie Graham to design an elegant new town close to the shipyard. This became the centre of Birkenhead, focused on Hamilton Square and Birkenhead Park.



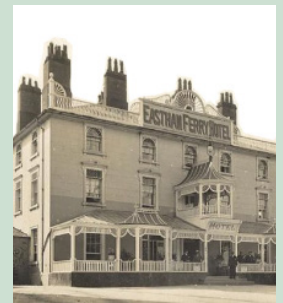
Joseph Mayer was born in 1803 in Staffordshire. By the late 1850s he had moved to Bebington, and quickly immersed himself into village life, transforming and enriching the lives of the community. He was instrumental in bringing gas and water services to the village and founded many clubs.

He established a free library in Bebington in 1866. He later also developed 5 acres of parkland, orchards and a public hall, all for the community.



In 1846, the owner of the ferry, Thomas Stanley, built the Eastham Ferry Hotel and shortly after, the Pleasure Gardens were added to attract more visitors.

The gardens were landscaped with rhododendrons, azaleas, ornamental trees and fountains. Attractions included a zoo, with bears, lions, monkeys and antelope, an open-air stage, tea rooms, bandstand, ballroom, boating lake, water chute.



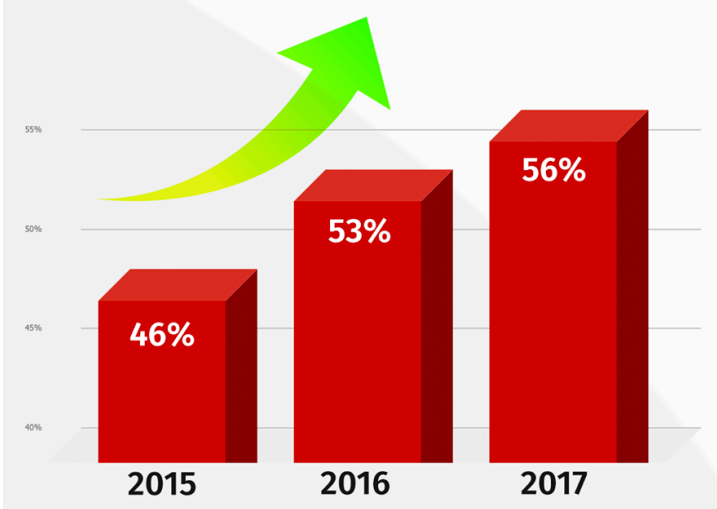
The Wilson family established Price's Patent Candle Factory in Bromborough Pool in 1853. The wellbeing of their employees was so important that they built a village of 147 houses with a church, institute, shop and library for its workforce.

This model village was an inspiration to other employers and was copied at Lever's Port Sunlight factory and by Cadbury's Bourneville village .

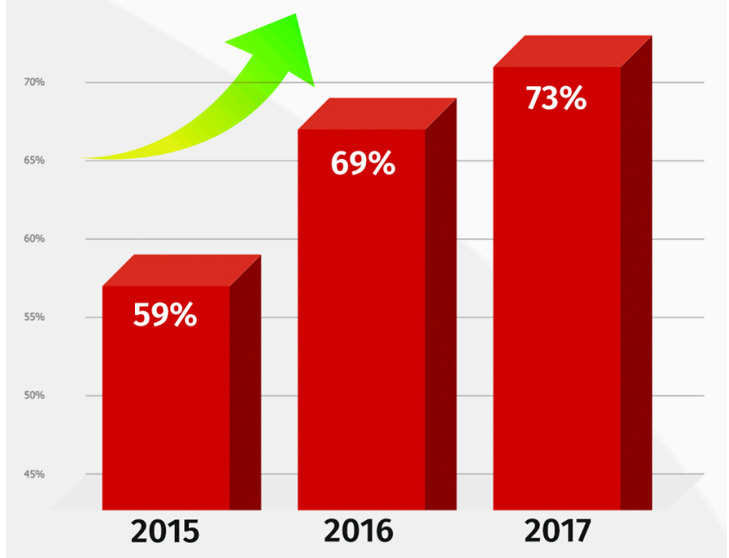


*Our school Houses are all named after families who made a positive contribution to our local community. The Laird, Mayer, Stanley and Wilson families all sought to improve the lives of others.*

## STUDENTS ACHIEVING 5 A\*-C INCLUDING ENGLISH & MATHS



## STUDENTS ACHIEVING 5 A\*-C



## PROGRESS 8

**+0.01 SOUTH WIRRAL HIGH SCHOOL**

**0 NESTON HIGH SCHOOL**

**-0.01 PRENTON HIGH SCHOOL FOR GIRLS**

**-0.11 WIRRAL GRAMMAR SCHOOL FOR BOYS**

**-0.21 BEBINGTON HIGH SPORTS COLLEGE**

## WHAT OFSTED SAY

*"The school's work to promote pupils' personal development and welfare is good. Leaders have recently overhauled the school's pastoral systems and this has significantly improved the level of care pupils receive. Staff know pupils well."*

*"Pupils' behaviour is good and improving. Pupils are happy, tolerant and respectful."*

## ETHOS & VALUES

Here at South Wirral High School, we pride ourselves on the outstanding pastoral support we offer our students. This enables our students to achieve their full potential, reducing any barriers to learning they may face.

We offer a range of support strategies and have an extensive network of external agencies that we work with in order to support our students' needs. We have an experienced team of Heads of House who manage the bespoke package of support for all of our students where needed.